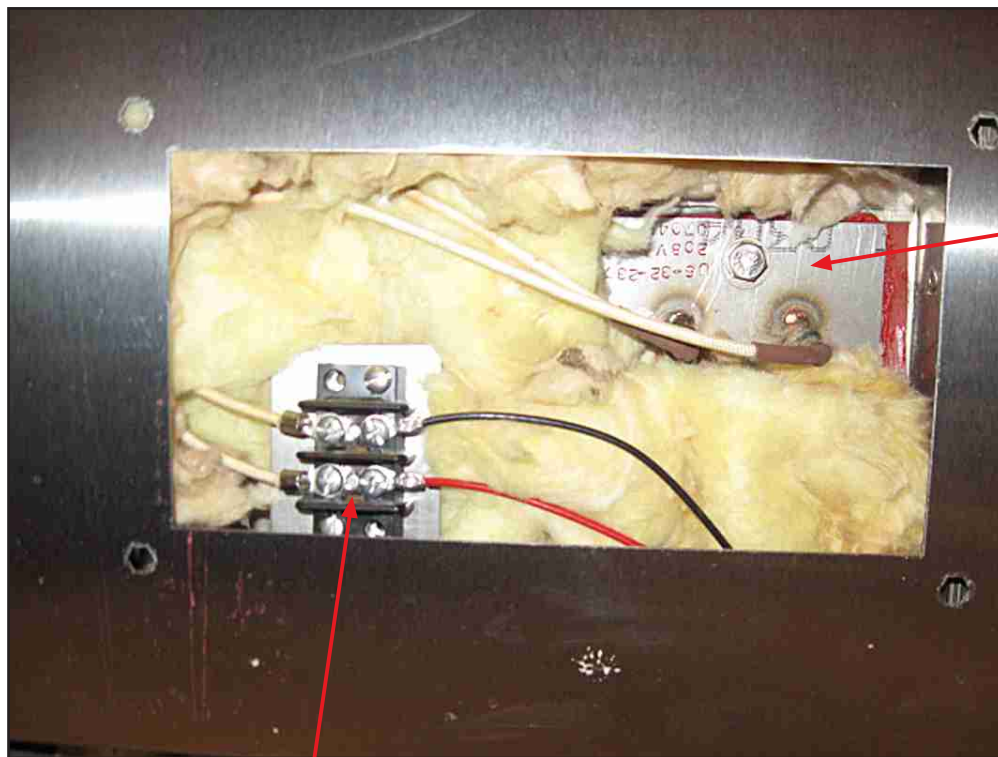


Replacing the Smoke Element

1. *Remove power from the unit by unplugging the oven or turning off the circuit breaker.*
2. Remove the (4) 10-32 x 5/16" hex screws from the right hand bottom side panel cover to expose the terminal block and element base.
3. Remove the (3) screws holding the element base from the outside of the cabinet and Remove the two screws holding the terminal wires at the smoke element terminal block.
4. Pull the element out the side of the cabinet.
 - Examine the gasket for reuse. In most cases the gasket can be reused.
5. Insert the new element through the opening on the cabinet side, align the element base screw holes with the gasket and thread the screws into the inserts, tighten the screws firmly.
6. Reattach the wires to the terminal block.
7. Reinstall the side cover and reconnect the power to the oven.
8. Test the Smoke Element.
 - Method 1 use Diagnostic instructions to test smoke element.
 - Method 2 use menu to test smoke element.



600 watt Smoke
Element base
(#360 for 240V
#372 for 208V)

Smoke Element
Terminal Block
(#1047-2)